



Practitioner Interest Package

Last updated: December 2018

Table of Contents :

- A. Rental Packages
- B. Marketing Options
- C. Sacred Agreements
- D. Floor Plan

Sacred Roots Holistic Healing

We will hold a three-part mutual interview over one week:

- I. Go over questions about what we offer and your background (30-45 minutes)
 - II. Experience a 30 minute practical session from you in the space.
 - III. Discuss logistics of our collaboration. (15-30 minutes)
-

A. Private Treatment Room

Rental Packages

Initial Deposit for all Practitioners (will be returned): \$100

Pay-As-You-Go Package

Does not expire for two years from payment date. You are responsible for monitoring your hours.

Six Hour Bundle : \$180

SMT 4 hour bundle : \$140

SMT 8 hour bundle : \$280

Monthly Rental Packages

Due monthly on the 15th. Hours do not roll over.

Monthly 16 Hour Bundle (4 hr/week) : \$360

Monthly 32 Hour Bundle (8 hr/week) : \$640

Practitioner Interest Package

Sacred Roots Holistic Healing

Monthly 64 Hour Bundle (16 hr/week, Residency included): \$960

- Residency can be established after 45 days
- Overage hours are \$25 an hour (unless discussed otherwise)
- \$5/day late fees apply
- We have two rooms available for talking therapies and three rooms available for table treatments.
- Capacity varies in each room.
- Permanent reservation of one room/ time slot is available upon request.

Signature Massage Rental Packages

Specifically suited for Certified Massage Therapist

4 Hour Bundle : \$140

8 Hour Bundle : \$280

Includes:

- SR referral
- Brief SMT training
- one year program to build your practice and small business skills.
- *If SMT is of interest please specify during your initial interview.*

Practitioner Interest Package

B. Marketing Options

Resident Practitioner vs. Private Practitioner

Thank you for your interest in joining our family at Sacred Roots Holistic Healing! Give your practice exposure to the SR network as a Resident Practitioner or utilize the space privately.

Resident Practitioner Benefits

- ★ **SRHH Website exposure** (*set up after the 45 day trial is verified*)
- ★ **Social Networking Perks:** Facebook, Meet Up, Yelp
- ★ **SRHH phone line extension** that goes direct to your cell phone**
- ★ **Account with Booker Scheduling Software** - online receptionist. (*Private practitioners have access to this as well*)
- ★ **Featured at our monthly Community Clinic** without a 30/70 split (*private practitioners split 30% of profits with SR*)
- ★ **Featured Blogs** - send us your goods to share!
- ★ **Community Events:** Farmers Market, Expos, Festivals, Fundraisers (*when offering services private practitioners share profits 30/70 split*)
- ★ **Resident Picture** in the Lobby
- ★ **2 Self-Care Hours Every Month** to receive trades from other practitioners.
- ★ **2 Extern Massages Per month**
- ★ **12 month commitment minimum**
- ★ **1 Hour Per Month of Seva** or trade to go toward the collective space needs (For both private & resident practitioners)

Practitioner Interest Package

Resident Practitioner Pricing

\$111 for the first 45 days

\$55 One-Time Admin Fee for set up costs

\$111 Due Monthly on the 15th (post trial)

Contact Jocelyn directly with any questions concerning this information at 714-717-4199

C. Sacred Agreements

When creating a genuine, grounded environment we seek to embody the following principles and request the same for all our practitioners and event hosts.

Harmonious Awareness

Our space is sacred, treat it as you would your own body. I agree to take responsibility for my actions and how they may affect others as well as the space. I agree to maintain cleanliness and peace, and to respect all interactions with reverence.

Emotional Safety

Our space is a place of healing, solace and retreat. I agree to establish harmony in all my relations to maintain safety and peace. I agree to tenderly approach anyone who may be jeopardizing emotional and physical safety with respect, love, and honesty.

Stewardship

Our planet, our bodies and all its inhabitants are dependent on each other. I understand that the choices I make affect the next 7 generations on this planet. I agree to live mindfully, make conscious choices that are good for the Earth and my body.

Accountability

We practice what we preach. I will uphold my values and principles in all veins of my life. I choose to live authentically and to be present with myself and others. I will exemplify the same self-care principles that I teach others to live by.

Professionalism

As people, we will honor one another's time and need for punctuality, prompt correspondence, follow through, boundaries, and consistency. I agree to honor all my fellow human being's time, as well as my own. I will communicate if I receive a request that is outside of my comfort zone or scope of practice, ask for support or refer them to someone who can better serve them.

Acting with Impeccable Integrity

Honesty and Integrity creates the fertile ground from which to grow and serve others as well as ourselves. I agree to be honest in all arenas of my life by upholding all agreements and values. I choose to speak my truth and be vulnerable enough to express my own needs and feelings and to also listen compassionately for others feelings and needs.

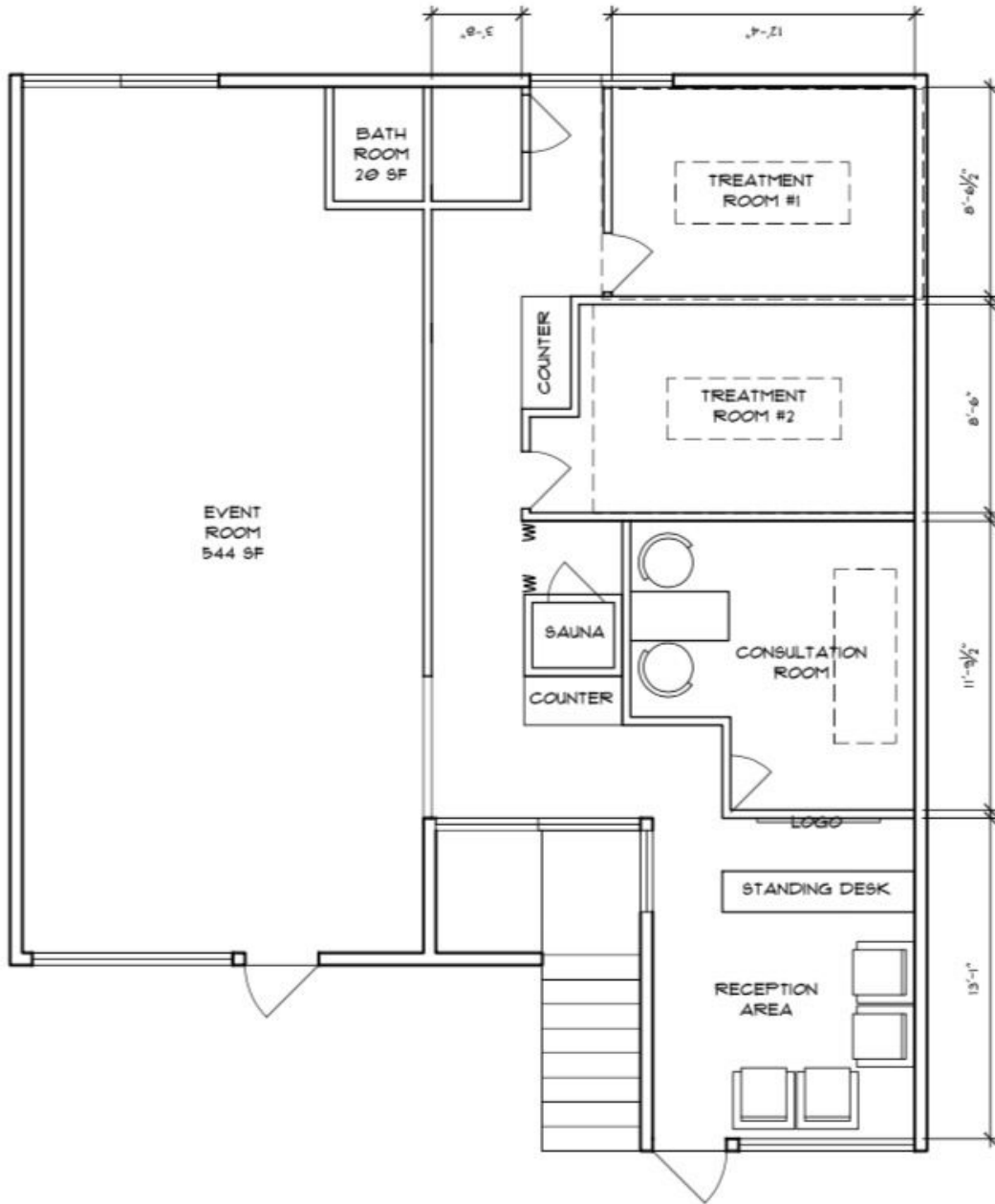
Open Hearted Communication

Non-violent communication, microscopic truth and clarity are the tenants to resolve discord and disharmony within our space. I agree to remain open-hearted and create a safe space to discuss and move through any challenges as an opportunity to learn, grow and uplift myself and others.

Following our Highest Joy

I choose to follow the organic evolution of my path with compassion and inspiration. In this way I will share my deepest joy with those I serve along with serving my highest good.

D. Floor Plan



Practitioner Interest Package